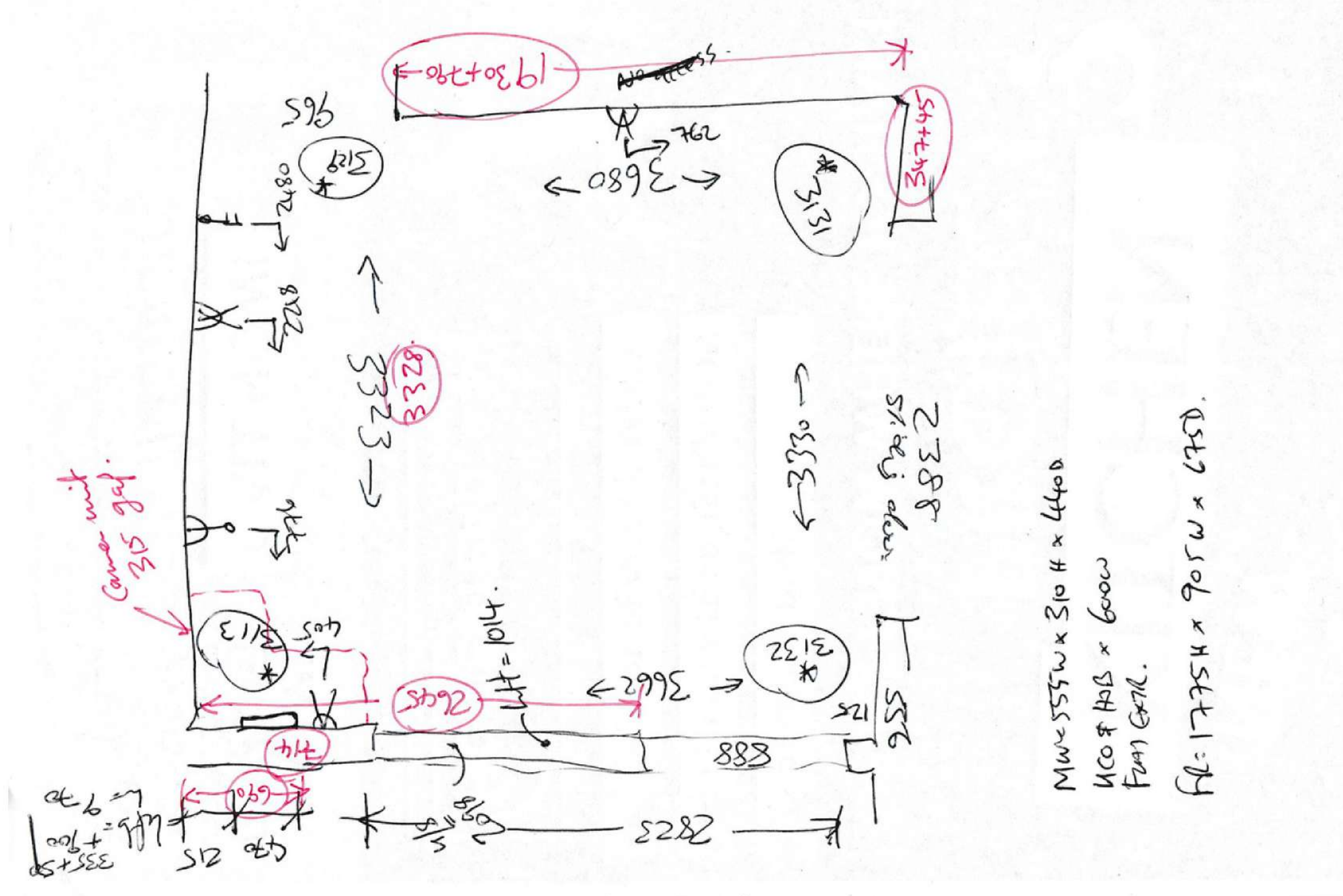


# THE MEASURED SKETCH







# THE DRAWINGS









# INSTALLED KITCHEN





















# THE CUTTING LIST

Cutting List			
Job Reference :	Total Sheets :	18	
Client Name :	Job Panels :	285	
Phone Number :	Job Wastage :	14,13 %	
Fax Number :	Job Cut Length :	508024 mm	
Address :	Date Required :	2024/01/17	

## White Melamine 16mm

Code	Actual Size				Cutting Size			
	Length	Width	Qty	Edging (L-L-W-W)	Length	Width	Qty	Notes
F1200 Reach-in BRT	1168 mm	564 mm	2	Congo 1mm-0-0-0	1168 mm	564 mm	2	
F1200 Reach-in Fixing Rails	1168 mm	80 mm	8	Congo 1mm-0-0-0	1168 mm	80 mm	8	
F1200 Reach-in Shelf	1168 mm	564 mm	2	Congo 1mm-0-0-0	1168 mm	564 mm	2	
F1200 Reach-in Sides	719 mm	564 mm	4	Congo 1mm-0-0-Congo 1mm	719 mm	564 mm	4	
F1500 Reach-in BRT	1468 mm	564 mm	1	Congo 1mm-0-0-0	1468 mm	564 mm	1	
F1500 Reach-in Fixing Rails	1468 mm	80 mm	4	Congo 1mm-0-0-0	1468 mm	80 mm	4	
F1500 Reach-in Shelf	1468 mm	564 mm	1	Congo 1mm-0-0-0	1468 mm	564 mm	1	
F1500 Reach-in Sides	719 mm	564 mm	2	Congo 1mm-0-0-Congo 1mm	719 mm	564 mm	2	
F230 BRT	198 mm	494 mm	1	Congo 1mm-0-0-0	198 mm	494 mm	1	
F230 Fixing Rails	198 mm	80 mm	4	Congo 1mm-0-0-0	198 mm	80 mm	4	
F230 Shelf	198 mm	494 mm	1	Congo 1mm-0-0-0	198 mm	494 mm	1	
F230 Sides	719 mm	494 mm	2	Congo 1mm-0-0-Congo 1mm	719 mm	494 mm	2	
F430 BRT	398 mm	564 mm	1	Congo 1mm-0-0-0	398 mm	564 mm	1	
F430 Fixing Rails	398 mm	80 mm	4	Congo 1mm-0-0-0	398 mm	80 mm	4	
F430 Shelf	398 mm	564 mm	1	Congo 1mm-0-0-0	398 mm	564 mm	1	
F430 Sides	719 mm	564 mm	2	Congo 1mm-0-0-Congo 1mm	719 mm	564 mm	2	
F450 Bin BRT	418 mm	564 mm	1	Congo 1mm-0-0-0	418 mm	564 mm	1	
F450 Bin Drawerbox Base	468 mm	359 mm	1	0-0-0-0	468 mm	359 mm	1	